

CHAIN BUCKET ELEVATORS

Chain bucket elevators are continuous conveyors for the predominantly vertical, dust-free conveying of powdery, granular and lumpy bulk materials.

The main dimensions are shown in Table 1.

The bucket elevator housings are self-supporting.

The drives have a backstop. For power transmission, we use a hydro or mechanical coupling.

For product feeding and discharge we are engineering the required plant components including electrical control, additional aggregates, working platforms, steel construction and many more.

We design the exact layout data according to the customer's requirements.

The table below (Table 1) contains information on conveying capacity, power requirement and main dimensions for the individual bucket elevator sizes. The data on conveying capacity and power requirement are only approximate values and depend on the material conveyed. The conveying capacity is based on a bucket filling ratio of approx. 80%, the power requirement on a bulk density of 1t/m^3 . The bucket filling ratio used by us applies to powdery and fine-grained bulk materials and should not be exceeded for reasons of possible uneven bucket elevator charging. With increasing grain size or lump size of the material to be conveyed, the bucket filling ratio and thus the indicated conveying capacity decreases up to about half of the listed values. Precise information on conveying capacity and power requirements can therefore only be given if the material to be conveyed is known in detail. The data in Table 1 on the dimensions of the bucket elevator housing are also valid for bucket elevators with special round link chains and toothed chain rollers, furthermore with steel pin chains and sprockets.

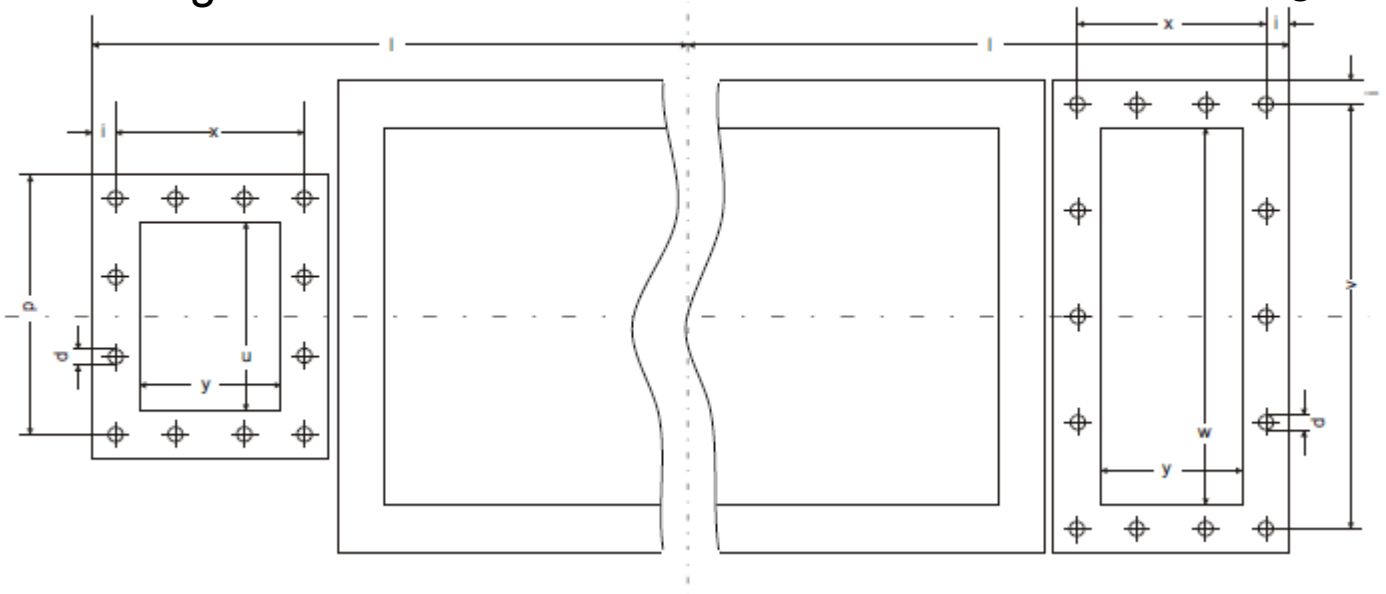
subject to technical changes

Chart 1

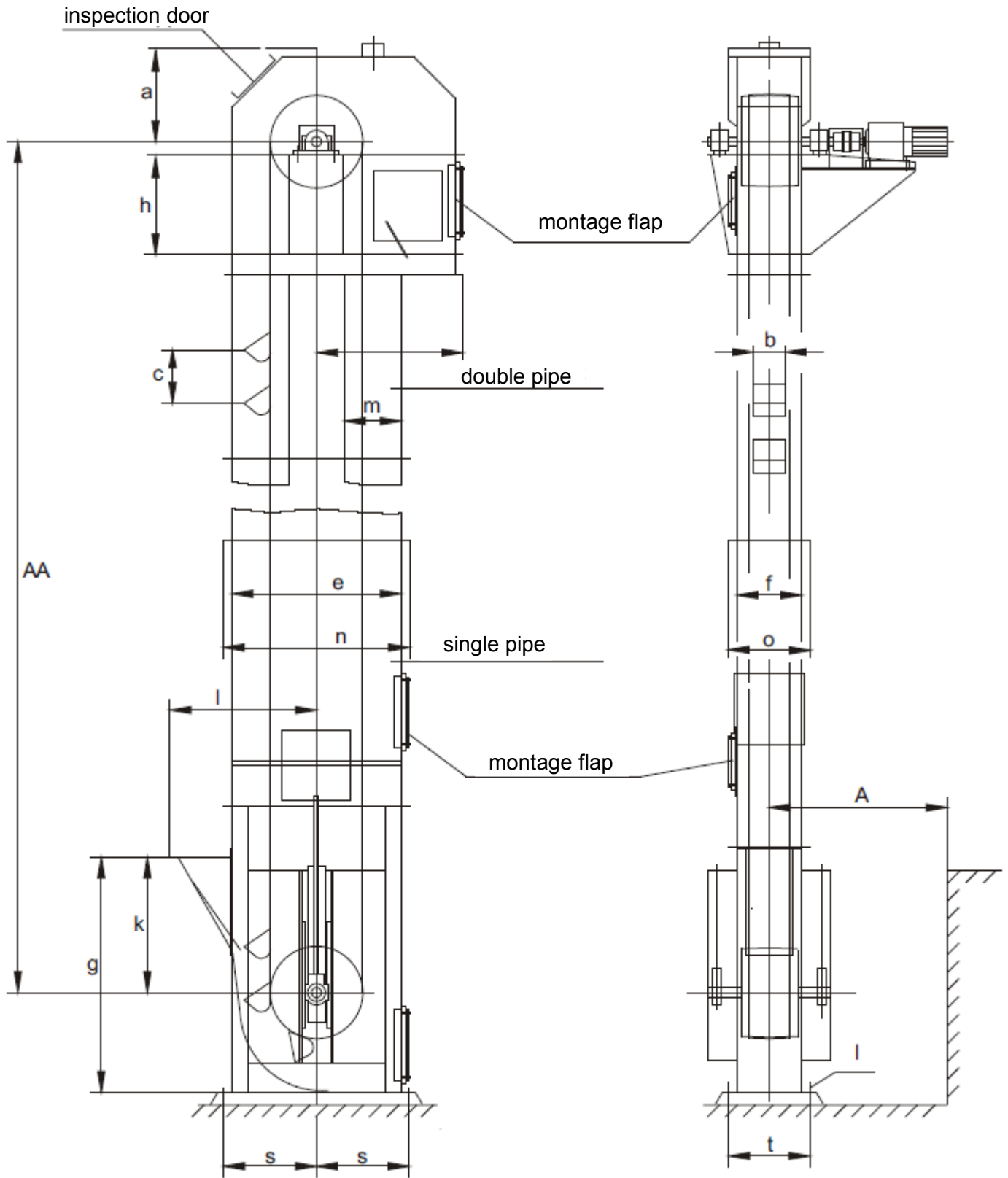
Becherbreite	b	160	200	250	315	400	500	630	800	1000	1250
Becher	Förderleistung m³/h	7,5	11,5	17	27	48	67	103	138	204	327
DIN 15233	Kraftbed. F. 25 m A-A kW	2	2,5	3,5	4,5	7,5	10	15	20	28	40
Becher	Förderleistung m³/h	11,5	18,5	27	43	76	106	162	220	327	474
DIN 15234	Kraftbed. F. 25 m A-A kW	2,5	3	4,5	6,5	10	14	22	28	40	53
Fördergeschwindigkeit	m/s	1,02	1,02	1,15	1,15	1,2	1,22	1,34	1,34	1,47	1,47
Drehzahl	ca. U/min	39	39	35	35	32,4	29	28,4	25,4	22,5	22,5
Kettenrollenteilkreis Ø	D	500	500	630	630	710	800	900	1000	1250	1250
Kette DIN 764	Dicke	13	13	16	16	20	23	26	30	36	36
	Teilung	45	45	56	56	70	80	91	105	126	126
	Gliederzahl	7	7	7	7	5	5	5	5	5	5
Bügel DIN 745 od. DIN 5600	Dicke	15	15	18	18	23	26	30	36	42	42
	Teilung	56	56	63	63	80	91	105	126	147	147
Becherabstand	c	371	371	455	455	491	491	560	651	777	777
Kopf und Fuss	h	630	630	750	750	850	1000	1120	1250	1500	1600
	l	900	900	1030	1125	1250	1410	1560	1730	2030	2130
	g	1120	1120	1250	1250	1400	1600	1800	2000	2450	2550
	k	450	450	450	450	520	630	720	750	900	1000
Schlote	e	1000	1000	1180	1250	1400	1600	1800	2000	2450	2550
	f	280	355	400	475	560	670	800	1000	1200	1500
	m	355	355	400	425	475	530	600	670	800	850
	n~	1090	1090	1270	1360	1510	1730	1930	2170	2620	2720
	o~	390	470	510	600	690	820	950	1190	1400	1700
	s	500	500	550	600	650	750	850	950	1150	1200
Fuss- anker Löcher	t	330	405	450	540	625	744	876	1100	1296	1596
	d	15	15	15	15	15	20	20	20	20	20
Ausbauabstand min.	r	800	850	1000	1050	1200	1350	1550	1850	2200	2600
Ein- und Auslaufflansch	l	900	900	1030	1125	1250	1410	1560	1730	2030	2130
	u	126	160	200	250	315	401	500	630	802	1000
	w	286	361	406	480	565	674	806	1010	1206	1506
	p	2x85	2x102	2x122	2x155	3x125	3x157	3x190	3x240	4x223	5x218
	v	3x110	3x135	3x150	4x135	5x125	4x186	4x219	5x220	6x216	7x228
	y	272	272	312	342	393	422	473	480	555	606
	x	2x158	2x158	2x178	3x134	3x151	3x164	3x181	3x190	3x215	3x232
	l	18	18	18	20	20	25	25	35	35	35
d	15	15	15	15	15	20	20	20	20	20	

inlet flange

outlet flange



subject to technical changes



We also provide you with the necessary plant components for the product feed and the product discharge including the electrical control system.

subject to technical changes